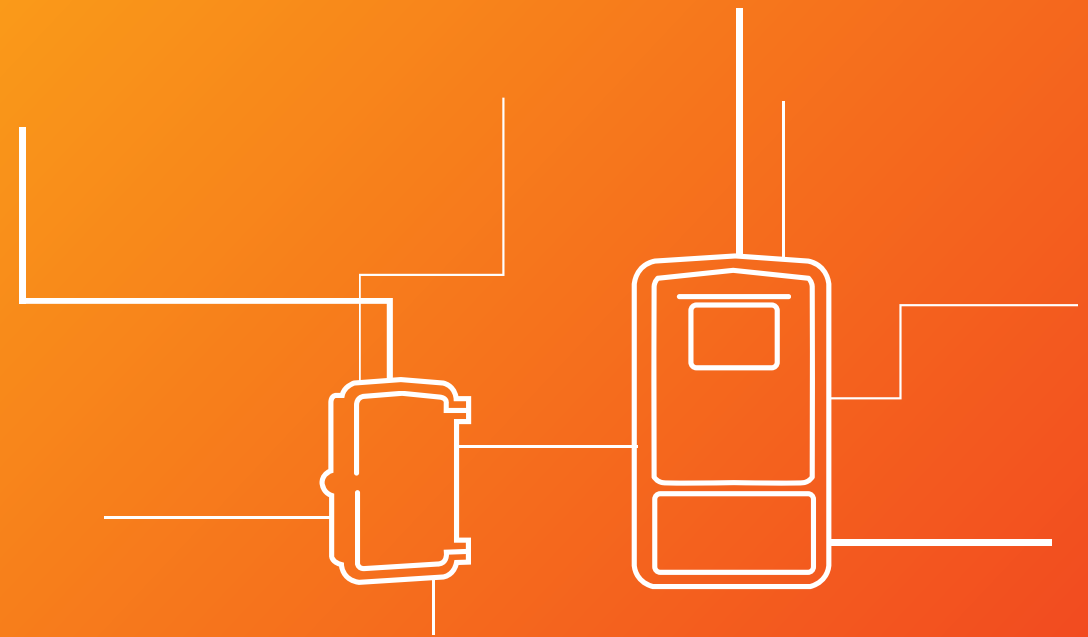


Divya Electricals
Chennai

Contact:

9841260168
96009984212
044-4216 5795
divyaelectricalschennai@ya
hoo.co.in

BRANCH OFFICE STAMP



100% shockproof.



Sintex SINCE 1975
ELECTRIC AL

Electrical and SMC Products

SMC Junction Boxes



Features:

- Shockproof and rustproof
- Rotproof and termite resistant
- Cable entry from bottom and/or sides
- 100% weatherproof
- Pole mounting arrangement
- Tamper proof
- Pilferage proof
- Restricts unauthorised tapping
- Maintenance-free
- Fire retardant – Class FV-0 as per IS:11731 Part-II or V-0 as per UL-94
- High heat distortion temperature (200°C as per IS:10192)

RANGE & SPECIFICATIONS		
Code No.	Inside Dimensions (mm) H x W x D	Applications
SIDE HINGED – DOOR FIXED TO BASE WITH HINGES		
GSJB-1414	140 x 140 x 95	Junction box/cut-out box/fuse box for single phase/2 core low wattage FTL/CFL based lighting system for pedestrian/pathway illumination
GSJB-2014	200 x 140 x 95	
GSJB-2817	240 x 130 x 110	Pole mounted junction box/cut-out box/fuse box for road/street lighting for 3 phase/4 core high wattage HPSV/HPMV/MH based lighting system for industrial applications
GSJB-2520	250 x 200 x 105	
GSJB-3020[1] (right hinged)	300 x 200 x 105	
TOP HINGED – DOOR FIXED TO BASE WITH HINGES ON TOP		
GSJB-1616-T	155 x 155 x 100	Junction box/cut-out box/fuse box for single phase/2 core low wattage FTI/CFL based lighting system for pedestrian/pathway illumination
GSJB-3016-T	275 x 135 x 110	Pole mounted junction box/cut-out box/fuse box for road/street lighting for 3 phase/4 core high wattage HPSV/HPMV/MH based lighting system for industrial, commercial as well as flood lighting applications
SLIDING – DOOR FIXED TO BASE BY MEANS OF SLIDING		
GSJB-3416	340 x 160 x 90	Pole mounted junction box/cut-out box/fuse box for road/street lighting for 3 phase/4 core high wattage HPSV/HPMV/MH based lighting system for industrial, commercial as well as flood lighting applications Provision for fixing 2 cut-outs, one for lighting and other for kiosks/signage/emergency power supply
REMOVABLE – DOOR FIXED TO THE BASE BY MEANS OF HARDWARE		
GSJB-1510-R	155 x 100 x 60	Control terminal box/cut-out box
GSJB-1816-R	185 x 165 x 60	
GSJB-2818-R	280 x 180 x 60	

SMC Meter Boxes

Features:

- Singlepiece moulded without any joints
- Concealed metal hinges
- Mounting screws fitted from inside
- Metal hardware for wire seal
- Adequate space for meter and cut-outs
- Wide range for different applications
- Lightweight yet strong
- Weatherproof
- Prices matching conventional meter boxes
- Shockproof
- Free from pilferage
- Maintenance-free



RANGE & SPECIFICATIONS		
Code No.	Internal Dimensions (mm) H x W x D	Description
SINGLE HINGED DOOR		
GSMB-2520	250 x 200 x 105	L.T. 1 phase kWh meter
GSMB-2522	250 x 220 x 135	L.T. 1 phase kWh meter
GSMB-2525	250 x 250 x 155	L.T. 1 phase kWh meter
GSMB-2823	285 x 230 x 150	10 meter box with transparent lid
GSMB-3428	340 x 285 x 120	L.T. 3 phase kWh meter
GSMB-3525	350 x 250 x 150	L.T. 3 phase kWh meter
GSMB-3527	350 x 270 x 200	L.T. 3 phase kWh meter
GSMB-3726	325 x 220 x 150	L.T. 3 phase kWh meter
GSMB-3920	390 x 200 x 105	L.T. 3 phase kWh meter
GSMB-3923	380 x 225 x 140	L.T. 3 phase kWh meter
GSMB-3727	370 x 270 x 210	L.T. 3 phase static kWh meter
GSMB-4030	400 x 300 x 190	L.T. 3 phase kWh meter
GSMB-4537	450 x 375 x 200	L.T. 3 phase kWh meter
GSMB-5345	530 x 450 x 175	Multi-meter box for housing 4 nos. 1 phase meters and 3 nos. 3 phase meters
GSMB-5030	500 x 300 x 230	Meter and modem box
GSMB-5431	540 x 310 x 200	Meter and modem box
GSMB-3750	345 x 480 x 135	1 phase 2 meter box
GSMB-3750	345 x 480 x 210	Multi-meter box for housing 3 nos. 1 phase meters
GSMB-5728	570 x 280 x 220	H.T. TVM with TTb
GSMB-6545	650 x 450 x 150	
GSMB-7450	700 x 480 x 210	Multi-meter box for 4 nos. 1-ph. and 2 nos. 3-ph. kWh meters
GSMB-10069	1000 x 690 x 215	Multi-meter box for 6 nos. 1-ph. and 4 nos. 3-ph. kWh meters
DOUBLE HINGED DOOR		
GSMB-4422	430 x 215 x 150/120	L.T. 1 phase kWh meter with MCB and with viewing window for MCB
GSMB-4422-I	430 x 215 x 150/120	L.T. 1 phase kWh meter with MCB
GSMB-5628	505 x 240 x 150	L.T. 3 phase kWh meter with MCB
GSMB-5628-I	505 x 240 x 150	L.T. 3 phase kWh meter with MCB
GSMB-5628-II	505 x 240 x 265/150	L.T. 3 phase electronic kWh meter mounted on cast resin bar primary C
GSMB-6535	650 x 350 x 250	L.T. TVM with CTs
GSMB-6535-I	650 x 350 x 210	L.T. TVM with CTs
GSMB-6535-II	650 x 350 x 255	L.T. TVM with CTs
GSMB-7627	760 x 270 x 170	L.T. TVM with CTs
GSMB-8135	810 x 350 x 230	L.T. TVM with CTs
GSMB-8535	850 x 350 x 250	L.T. TVM with CTs
GSMB-9035	900 x 350 x 250	L.T. kWh/TVM with fuses/CTs/TTb
GSMB-9045	900 x 450 x 250	L.T. TVM with CTs
GSMB-7450	700 x 480 x 210	Multi-meter box for housing 4, 6 nos. 1 phase meters and 4 nos. 3 phase meters
GSMB-10035	1000 x 350 x 230	L.T. TVM with CTs and modem
SINGLE DOOR PUSH FIT		
GSMB-2520-T	250 x 200 x 105	1 phase kWh meter (electronic) with P.C. transparent lid
GSMB-2619-T	260 x 190 x 129	1 phase kWh meter (electronic) with P.C. transparent lid
GSMB-3428	340 x 285 x 120	1 phase kWh meter (electronic)
GSMB-3833	384 x 334 x 125	3 phase electronic kWh meter
GSMB-3727	370 x 270 x 210	3 phase electronic kWh meter
GSMB-3727-I	370 x 270 x 145	3 phase electronic kWh meter

SMC Distribution Boxes

Features:

- High heat distortion temperature (200°C as per IS:10192)
- Non-fusing
- Shockproof and rustproof
- Rotproof and termite resistant
- Ideal for both indoor and outdoor use
- Elegant appearance
- 100% weatherproof
- Fire retardant – Class FV-0 as per IS:11731 Part-II or V-0 as per UL-94



RANGE & SPECIFICATIONS		
Code No.	Inside Dimensions (mm) H x W x D	Application
SINGLE HINGED DOOR		
GSDB-3020	295 x 195 x 100	1 phase service connection distribution box, fuse box
GSDB-3126	270 x 225 x 135	Electrical and hydraulic instruments, cut-outs, controls and switchgear
GSDB-3428	340 x 285 x 120	Fuse box
GSDB-3525	350 x 250 x 150	Fuse box
GSDB-3527	350 x 270 x 200	Fuse box
GSDB-3726	325 x 220 x 150	Fuse box
GSDB-3750	345 x 480 x 135	Pole top DB
GSDB-3920	390 x 200 x 105	Fuse box
GSDB-3727	370 x 270 x 210	Busbar chamber box
GSDB-4030	400 x 300 x 190	3 phase service connection distribution box/ABC distribution box
GSDB-5431	540 x 310 x 200	
GSDB-5728	570 x 280 x 220	Busbar chamber box
DOUBLE HINGED DOOR		
GSDB-4422	430 x 215 x 150/120	Control terminal box, fuse box
GSDB-4422-I	430 x 215 x 150/120	Control terminal box, fuse box
GSDB-5628	505 x 240 x 150	Busbar chamber box
GSDB-5628-I	505 x 240 x 150	Busbar chamber box
GSDB-5628-II	505 x 240 x 265/150	Busbar chamber box
GSDB-6050	600 x 500 x 250	1 phase distribution box
GSDB-6535	650 x 350 x 250	Busbar chamber box
GSDB-6535-I	650 x 350 x 210	Busbar chamber box
GSDB-6535-II	650 x 350 x 255	Busbar chamber box
GSDB-7450	700 x 480 x 210	Electrical control and switchgear items such as MCCB, fuse, isolator and busbar distribution box
GSDB-10069	1000 x 690 x 300	Electrical control and switchgear items such as MCCB, fuse, isolator and busbar distribution box
GSDB-11569	1150 x 690 x 350	Electrical control and switchgear items such as MCCB, fuse, isolator and busbar distribution box
GSDB-120110	1200 x 1100 x 400	With canopy + front and back (optional) doors and pedestal (optional) TNEB mini and UGVCLFSP

SMC Distribution Pillar Boxes

Range:

Standard design made as per the electrical requirements to suit conventional power distribution systems consisting of protection devices and metering, and also as per the clients' requirements.

- Mini pillars
- 2-way feeder pillar boxes
- 4-way feeder pillar boxes
- 6-way feeder pillar boxes
- 8-way feeder pillar boxes

The above configurations are available with electrical circuitry consisting of busbar works and protection devices such as rewirable kit-kats, HRC fuses, 1p/3p MCCB, and switch disconnecter/switch fuse disconnecter, etc. to suit the clients' requirements.

Note: Other sizes/ratings and configurations are available on request.



Features:

- Fabricated by combining SMC and pultruded FRP sections
- Maintenance-free
- Rustproof and shockproof
- Withstands coastal/polluted atmosphere, solar radiation and heavy rains
- Safe for humans as well as cattle due to insulated body

SMC Service Connection Distribution Boxes for AB Cable



SPRING LOADED CONSTANT PRESSURE MULTI-CONNECTION BUSBAR SYSTEM



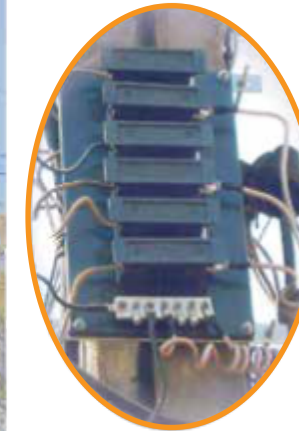
BUSBAR WITH SCREW BOLT CONNECTION SYSTEM

Features:

- Ingress protection to IP66
- Pole mounting arrangement
- Busbar for high fault currents
- Cable entry from bottom and/or sides
- Easy and organised management of consumer connections
- Shockproof and rustproof, suitable for polluted atmospheres
- Very high working temperature and higher arc resistance
- Weatherproof
- Maintenance-free

RANGE & SPECIFICATIONS				
Code No.	Approx. Dimension (mm)	No. of Service I/C	Connection O/G	No. of Busbar Module
SMC SERVICE MAINS DB HAVING SPRING LOADED CONSTANT PRESSURE, MULTI-CONNECTION BUSBAR IN SMC CASING				
GSSB-3020-406	300 x 200 x 130	1 no. 3-ph. TPN	5 nos. TPN	4 nos. 6-way
GSSB-3020-406 A	300 x 200 x 130	1 no. 1-ph. SPN	9 nos. SPN	4 nos. 6-way
GSSB-4030-210	400 x 300 x 190	1 no. 1-ph. SPN	9 nos. SPN	2 nos. 10-way
GSSB-4030-410	400 x 300 x 190	1 no. 3-ph. TPN	9 nos. TPN	4 nos. 10-way
GSSB-4030-410 A	400 x 300 x 190	1 no. 1-ph. SPN	17 nos. SPN	4 nos. 10-way
SMC SERVICE MAINS DB HAVING BUSBAR WITH SCREW BOLT CONNECTION THROUGH FLY NUT				
GSSB-3020-2 BB	300 x 200 x 130	1 no. 1-ph. SPN	5 nos. SPN	2 nos. 6-way
GSSB-3923-BB	380 x 225 x 140	1 no. 1-ph. SPN	8 nos. SPN	2 nos. 9-way
GSSB-3527-2 BB	350 x 270 x 210	1 no. 1-ph. SPN	8 nos. SPN	2 nos. 9-way
GSSB-4030-4 BB	400 x 300 x 190	1 no. 3-ph. TPN	4 nos. TPN	4 nos. 5-way
GSSB-4030-4 BBA	400 x 300 x 190	1 no. 1-ph. SPN	12 nos. SPN	4 nos. 9-way
GSSB-4537-BB	450 x 375 x 200	1 no. 3-ph. TPN	4 nos. TPN	4 nos. 5-way
SMC SERVICE MAINS DB WITH CLIP ON TYPE TERMINAL BLOCKS (TB)				
GSDB-3020-SP05-FB	300 x 200 x 105	1 no. 1-ph. SPN	5 nos. SPN	Link Mounted TB
GSDB-4030-TP04-FB	400 x 300 x 190	1 no. 3-ph. TPN	4 nos. TPN	Link Mounted TB

FRP Aerial Fuse Boards



Features:

- FRP base fuse board
- Shatter resistant
- Integrated parts, hence no detachment
- Excellent dielectric strength, no leakage
- Safe, tried and tested method
- Decay-proof, hence longer life

RANGE & SPECIFICATIONS

Range	Code No. 3-way	Code No. 6-way
15A	GSFB-15A3-01	GSFB-15A6-01
30A	GSFB-30A3-01	GSFB-30A6-01
60A	GSFB-60A3-01	GSFB-60A6-01
>60A	Please contact us for fuse box	

SMC Moulded Service Connection Boards

Features:

- Rustproof and waterproof
- Weatherproof and termite proof
- Maintenance-free
- Withstands solar radiation and heavy rains
- Excellent finish and dimensional consistency
- No decay, hence no painting or plank replacement required
- Consistent quality and timely delivery to match the pace of the project

RANGE & SPECIFICATIONS			
Code No.	Size (mm)	Description	Suitable for installation of
GSBPL-2515	250 x 150	1 Ø Service Connection Board	DP Switch, Lamp Holder, Switch and Fuse
GSBPL-3025	300 x 250	1 Ø Service Connection Board	1 Ø Meter, DP Switch, Lamp Holder, Switch and Fuse
GSBPL-3520	350 x 200	1 Ø Service Connection Board	1 Ø Meter, DP Switch, Fuse and Earth Terminal
GSBPL-3030	300 x 300	1 Ø Service Connection Board	1 Ø Meter DP MCB and Earth Terminal
GSBPL-4530	450 x 300	1 Ø Service Connection Board	1 Ø Meter, Lamp Holder, Switch, Earth Terminal, Neutral Link



SMC Water Meter Boxes



Features:

- Prevents meter damage
- Tamper proof
- Rustproof enclosure
- Weatherproof
- Maintenance-free
- Viewing window for reading meter
- Provision to seal the box

FRP 'V' Type Arms (REC Design)

Features:

- Anti-corrosive, hence suitable for coastal and

polluted atmosphere

- Ideal for harsh weather conditions
- No change in conductor formation/configuration as well as ground clearance while replacing metal 'V' type cross arms of existing lines
- Maintenance-free and requires no painting
- Extremely safe
- Reduced transportation cost and ease of erection
- Suitable for 11 kV overhead line
- Lightweight yet strong



RANGE & SPECIFICATIONS		
Code No.	Description	Application
GSXA-011-01	V Type Cross Arm	11 kV Lines 3Ø/1Ø Composite and 1Ø (Ph-N)/(Ph-Ph) type with or without earthwire
GSTH-011-01	Top Hamper	

Note: Flat Type FRP Cross Arms of 11 kV and 33 kV as per REC specifications and of 2' and 4' length with various pin configurations are available. Custom sizes are also available as per customer requirements.

FRP Straight Cross Arms (REC Design)

Features:

- Excellent insulation
- Lightweight and strong
- Special polymeric reinforcement provided as per REC specifications
- Anti-corrosive
- Ideal for any weather condition
- Made from advanced composite of plastics
- Extremely safe

RANGE & SPECIFICATIONS

- 11 kV Cross Arm
- 11 kV Top Hamper
- 33 kV Cross Arm
- 33 kV Top Hamper



Note: Conforms with REC specifications. No. 40 Rev. 97 for 11 kV. No. 42 Rev. 97 for 33 kV.

FRP Fencing

Features:

- Non-conductive due to high dielectric strength
- Strong and durable
- Non-corrosive nature
- Termite proof and rotproof
- Aesthetic design
- Maintenance-free
- Fire retardant
- Zero resale value – pilfer proof



SMC Danger Notice Plates



RANGE & SPECIFICATIONS		
Code No.	Size (mm)	Applications
GSSH-2025-1.6	200 x 250	For 11 kV and HV installation
GSSH-1520-1.6	150 x 200	For 415 V and LV installation

Features:

- Excellent finish and dimensional consistency
- Excellent weather resistance
- Rustproof
- No fear of vandalism
- Withstands coastal and polluted atmosphere
- Withstands solar radiation
- Maintenance-free: SMC does not corrode, hence retains paint for longer duration
- Transparent weather resistant coating
- Pilfer proof: zero resale value

Starter Panels for Agriculture Applications: Pumps and Motors

Features:

- Shockproof and rustproof
- Fire retardant
- Durable and lightweight
- Weatherproof
- Maintenance-free
- Suitable for housing, mini dol starter/star delta starter panel box along with ammeter, voltmeter, preventive devices and features

Range:

- Mini dol starter panel box
- Dol starter panel box
- Single phase starter panel box
- Three phase starter panel box
- Pump panel house (Custom sizes available for all)
- Star delta starter panel box



Catering to:

- Government bodies in the field of agriculture and irrigation
- Agriculture equipment manufacturers/suppliers and intermediates
- Farmers

LCS



Features:

- LCS (Local Control Station) with push buttons, selector switch, ammeter, voltmeter and emergency stop
- FRP enclosure with ingress protection
- Compact and excellent aesthetics
- Tamper proof
- Maintenance-free
- Shockproof and dustproof enclosure
- High mechanical strength
- Excellent electrical property and reliability
- 100% weatherproof and ideal for indoor and outdoor applications
- Fire retardant

Range:

- LCS with start/stop push buttons
- LCS with start/stop, auto/manual SS with ammeter and voltmeter
- LCS with customised application

Applications:

- Railways
- Steel plants
- Machines
- Industrial plants, etc.



Power Receptacles



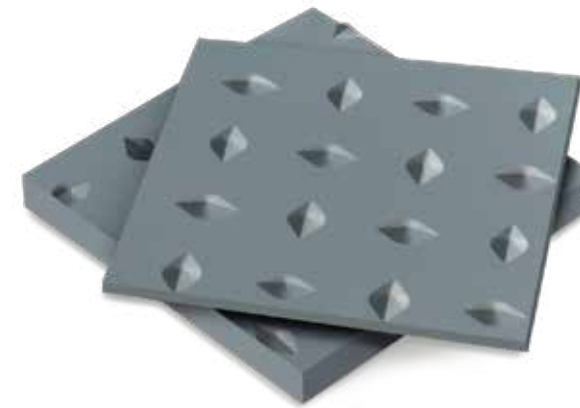
Features:

- Single and multiple outlet boxes
- Range: 16/32/63/125 amp. rating with heavy duty plug and socket with protection of MCB/MCCB or SDF
- Available with or without protection
- Modular and compact construction
- Loop-in, loop-out facilities
- FRP enclosure with ingress protection
- Tamper proof and maintenance-free
- Shock and dust proof enclosure
- High mechanical strength
- Fire retardant
- Excellent electrical property and reliability
- 100% weatherproof, ideal for indoor and outdoor applications
- Option of backup protection with: a) MCBs b) SDFUs c) MCCBs

Application:

- Railways
- Steel plants
- Welding machines
- Industrial plants
- Infrastructure projects
- R&B, etc.

SMC Chequered Plates



RANGE & SPECIFICATIONS

Rating of Equipment	Recommended Thickness (mm)
3.3 kV	2.5
6.6 kV	2.5
11.0 kV	2.5
22.0 kV	2.5
33.0 kV	5.0
66.0 kV	5.0
EHT Switch Yard	10.0

Features:

- Durable and resistant to decay
- Maintenance-free
- High dielectric strength
- High life expectancy
- Easy to fix on floor
- Excellent insulation
- Anti-corrosive
- Can withstand the load of breaker trolleys without obstructing their movement
- Lightweight

SMC MCB Distribution Boards (DBs)

Features:

- Specially folded construction prevents access to water, insects and dust
- Specially folded cover allows hinges to be fitted such that they can't be opened once fitted (provision for concealed hinges for total security)
- Moulded plastic extension pieces for fixing on the walls
- Moulded-in louvers for ventilation
- Holes on sides for dissipation of heat
- Moulded-in projections for fixing MCB, switches, etc.



RANGE & SPECIFICATIONS

Code No.	Inside Dimensions (mm) H x W x D	Applications
GSDB-1510	155 x 100 x 60	4-way
GSDB-1816	185 x 160 x 60	8-way
GSDB-2818	208 x 185 x 60	12-way

SMC Trench Covers and Gratings

Features:

- Lightweight and strong
- Durable and resistant to decay
- Anti-corrosive
- Resistant to wear and tear
- Fire retardant
- Zero resale value, hence no problem of pilferage
- High life expectancy

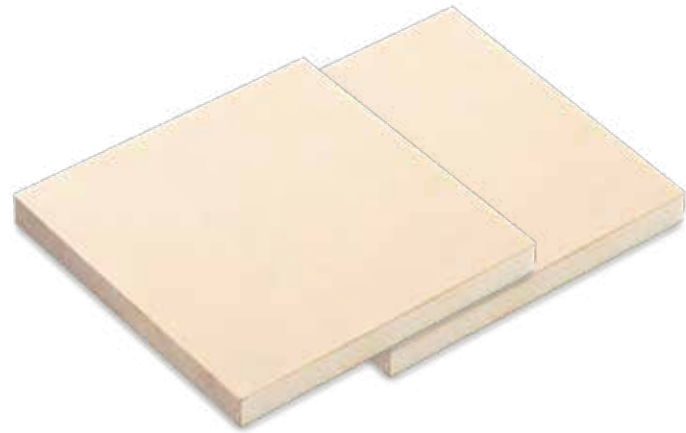


RANGE & SPECIFICATIONS

Length (m)	1
Width (m)	0.3, 0.45, 0.6, 0.75, 0.9, 1, 1.2 respectively or as per order
Standard Colour	Grey

Note: Sintex Trench Covers and Gratings are also supplied prefabricated with reinforcements of MS sections or FRP Pultruded sections to meet specific load applications.

SMC Sheets



Features:

- Excellent dielectric properties such as volume resistivity, surface resistivity, arc resistance and comparative tracking index
- Can withstand continuous temperatures up to 140°C
- Anti-corrosive and resistant to most acids, alkalis and chemicals
- Lightweight, strong, stiff and clean
- Non-hygroscopic and retains its dielectric properties even in high humidity
- Weatherproof
- Self-coloured
- Maintenance-free

RANGE & SPECIFICATIONS	
Size (m)	1 x 1
Standard Thicknesses (mm)	1.5, 2.5, 4, 6, 9, 12, 15
Material of Construction	Sheet Moulding Compound (SMC)
Custom Thicknesses on Large Requirements (mm)	From 1.5 to 15
Standard Colour	Off-white
Custom against Large Requirements	Other colours can be offered

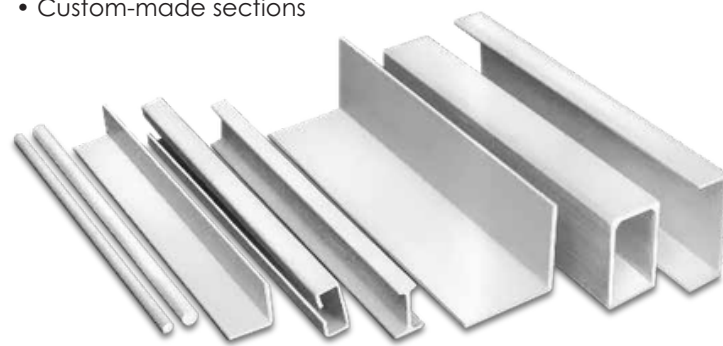
FRP Pultruded Sections

Features:

- High strength to weight ratio
- Corrosion-proof and resistant to most acids, alkalis and chemicals
- Suitable for all types of weather conditions
- Self-coloured and generally does not require painting
- Excellent electrical properties such as tracking resistance, high arc resistance and electrical insulation
- Poor conductor of heat and sound
- Stable in continuous operating in axial direction
- Lightweight, strong and durable
- Can be joined with mechanical fasteners or adhesives

Range:

- Angles
- Rods
- 'C' Sections
- Hollow rectangular sections
- Custom-made sections
- Approximately 50 different sizes and shapes available to choose from
- 'I' sections



Note: Jobs for custom designed sections can be taken up. Specific resin system can be adopted against bulk requirements.

FRP Ladders

Introducing, for the first time in India, Sintex FRP Ladders that find a variety of applications in domestic as well as industrial units. Manufactured as per international OSHA specifications, Sintex FRP Ladders are an optimum combination of safety, elegance and economy.



Features:

- Compact and easy to carry
- Waterproof and rustproof
- Designed for optimum stability as per international OSHA and ANSI standards
- Shockproof
- Lightweight and strong
- Safe and durable

RANGE & SPECIFICATIONS		
Self-Support 'A' type	Wall Support	Extendable
6 feet (GPFL-060-01)	15 feet (GPFL-150-WS)	20 feet (GPFL-200-ES)
5 feet (GPFL-050-01)	18 feet (GPFL-180-WS)	40 feet (GPFL-400-ES)
4 feet (GPFL-040-01)	-	-
3 feet (GPFL-030-01)	-	-

FRP Cable Trays



Cable Trays are used to support power cables and control cables for indoor and outdoor applications. G.I./M.S. cable trays erode, corrode and spread heat, thus leading to power interruptions. Sintex FRP Cable Trays are safe, durable and cost-effective for routing and supporting cables. Manufactured as per NEMA/BIS consultants' specifications, Sintex FRP Cable Trays are available in the following varieties:

Ladder Type FRP Cable Trays:

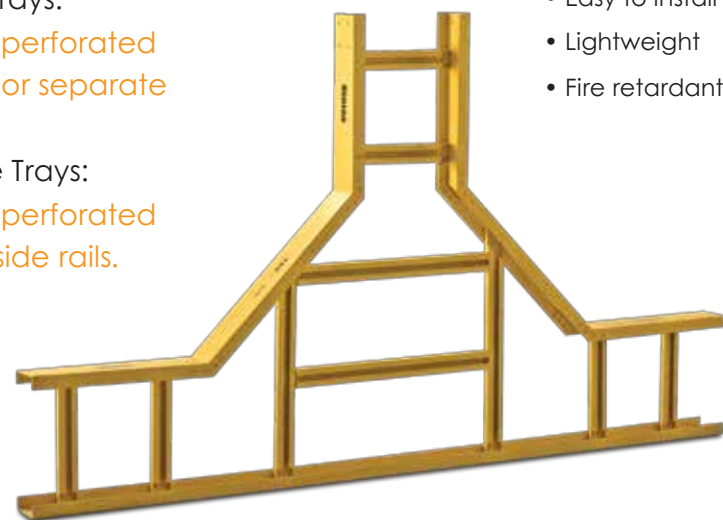
Two longitudinal side rails connected by rungs at regular interval.

Trough Type FRP Cable Trays:

Structures with a solid or perforated bottom, with integrated or separate longitudinal side rails.

Channel Type FRP Cable Trays:

Structures with a solid or perforated bottom with integrated side rails.



Features:

- Excellent weather resistance
- UV stabilised
- High load-bearing capacity
- Non-magnetic
- No corrosion and no chemical erosion
- Maintenance-free
- Easy to install
- Lightweight
- Fire retardant

FRP Battery Stands



Sintex Battery Stands are fabricated using FRP sections and polymeric hardware. Designs are available in both single row and double row, as well as in single tier and double tier. Dimensions and load-bearing members are selected to suit the battery. Sintex FRP Battery Stands are available for all types and all makes of batteries.

Features:

- Excellent dielectric strength, thereby eliminating leakage of current
- Not affected by termite and fungus attack
- Easy to clean and wash
- No warping
- Lightweight and strong
- Maintenance-free
- Resistant to battery acids
- Self-coloured