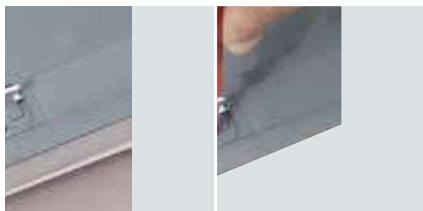


LID AND TRIM FOR CARPET

Simplicity and flexibility: the same lid and trim, the same socket outlets and the same wiring device supports are compatible with any type of Legrand floor systems.



METAL HANDLE AND LOCKING SYSTEM
for easy handling and securing access



Discreet integration with the floor

LID AND TRIM
common to all floor types.
Reversible lid for maximum flexibility



ROUNDED CORNERS



FLEXIBLE CABLE EXITS
for maximum protection of cables

Grey finish to suit the color
of the floor covering.
Supplied with protective
film for a perfect finish



LEVERS
for easier handling and removal
for installing on carpet

CABLE GUIDES

WAVED SUPPORT PLATES
for data connection

floor boxes 3 and 4 modules

for screed floor and raised floor



Conform to EN 50 085 - 2.2 and EN 60670-23
Flat and simple installation
Compatible with raised floor and screed floor system

Pack	Cat.Nos	Floor service outlet boxes - 3 modules
1	0896 44	Access units for raised or concrete floor (minimum height 80 mm) Floor service outlet box - 3 modules. Grey RAL 7031. To be Equipped with Arteor Mechanism
1	0896 49	Flush mounting box for concrete for Cat.No 0896 44
Floor Boxes - IP66 4 module		
1	0880 61	Conform to EN 60670-1 and EN 60670-23 standards (when lid is closed) / IP55 (with cable exit accessory Cat.No 0880 62) IP66/IK09 screwed stainl. steel floor box (with removable lid); can be equipped with cable exit accessory Cat.No 0880 62
1	0880 64	IP66/IK09 hinged cover stainl. steel floor box
1	0880 69	Auto adjustable back box for installing IP66 floor boxes in concrete floors; supplied with cover; accepts conduit dia 20 mm; min screed height 65 mm
1	0880 62	IP55 cable exit accessory

floor boxes 3 modules

for screed floor and raised floor

Material characteristics

The floor boxes are on plastic PC/ABS RAL 7031.
Temperature of use of transport and storage: -5°C/+60°C

- Conforms to standard NF EN 60.670-1
- IP 20/IK07
- Grey color RAL 7031

Technical information

Compression test, 500N / 1cm² during 1 min :
Comply with norm CEI 60670-23 (2004)

No degradation after 10000 opening/closing

For restoration in the presence of a technical floor low depth or for concrete (height 80mm)

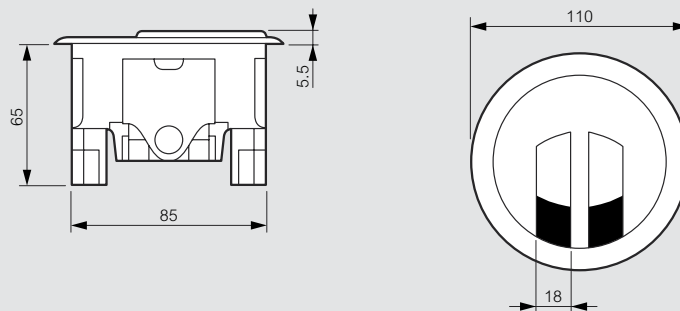
To be equipped with 2 module Arteor sockets & 1 module data or switch

2 covers of independent exit for the cables current low and high tension current

Dimensions

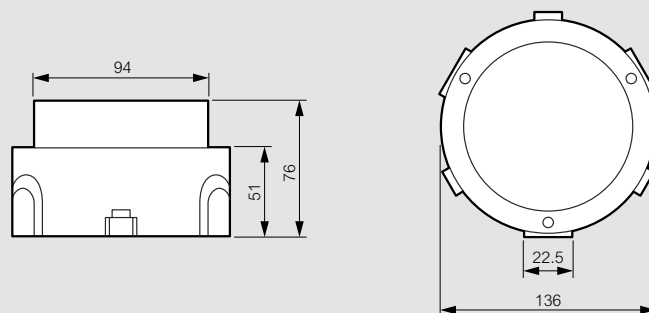
Under floor boxes 3 modules:

Cat.No 0896 44



Flush mounting box:

Cat.No 0896 49



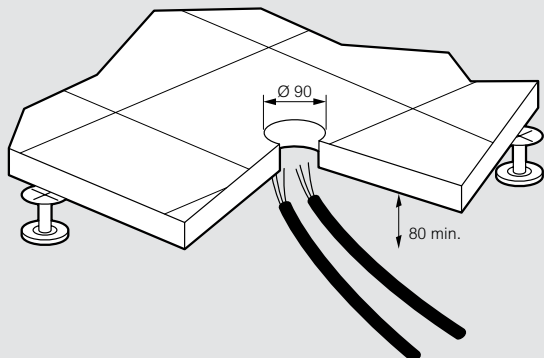
floor boxes 3 modules

for screed floor and raised floor

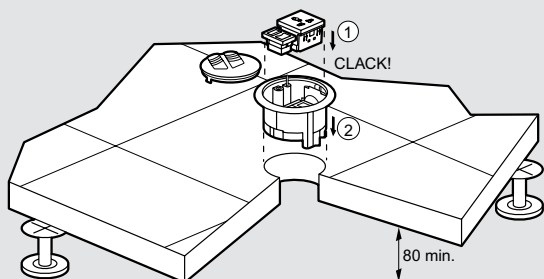
Installation

In raised floor

Minimum raised floor height: 80 mm

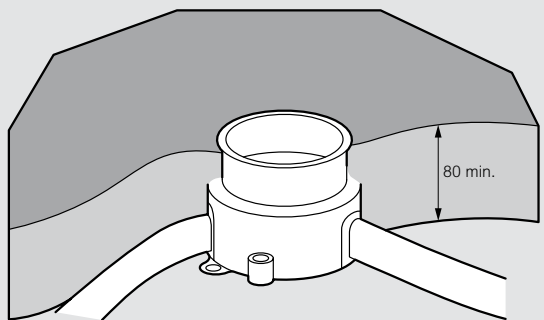


Can be equipped with: 2-module socket outlet and 1-module RJ 45 data socket. Direct clip into 3-module support frames

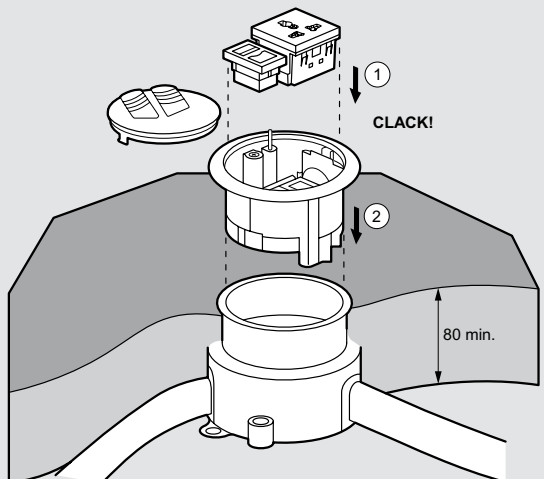


In concrete floor

With flush-mounting box Cat.No 0896 49



Can be equipped with: 2-module socket outlet and 1-module RJ 45 data socket. Direct clip into 3-module support frames



The wiring device support allows to mount:

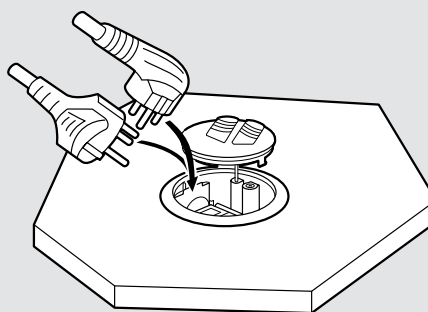
1 socket Arteor standard 2 modules :



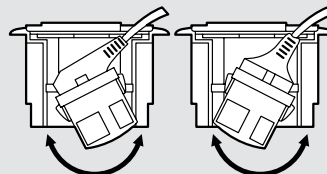
And 1 socket RJ 45 1 module only



Compatible with straight outlet or side outlet plug

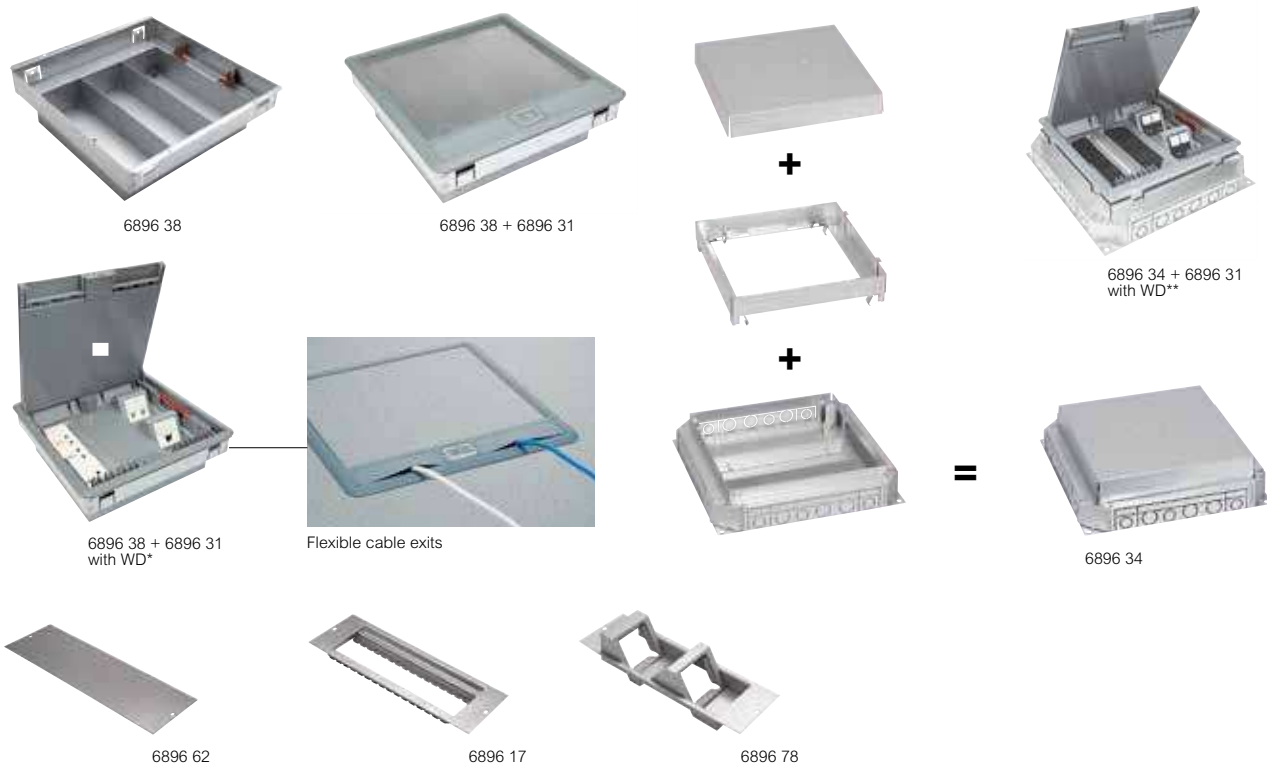


The support frame for wiring devices tilt up in order to accept a straight outlet plug or a side outlet plug



floor boxes for carpet

raised floor and screed floor



Technical characteristics & installations p. 15-17

Conform to EN 50 085 - 2.2 and EN 60670-23
 Flat and simple installation
 Compatible with raised floor, flush floor and screed floor system

Pack	Cat.Nos	Floor boxes for raised floor
1	6896 38	Full backbox for raised floor 3 compartments (264 x 264 mm). Height 86 mm. Backbox to be connected to trunking with flexible conduits.
5	6896 31	Lid & trim for 3 compartment floor box Grey cover RAL 7031 with flexible cable exits. Size 265 mm x 265 mm
12	6896 62	Support plates for floor boxes 77 mm width plate Blank plates for floor box. To cover of an unused compartment.
1	6896 17	Flat support plate 8 module for integration of Myrius/Arteor mechanisms
4	6896 78	Waved support plates. For 4 modules (2 x 2 modules)

*Floor box raised floor with support plates & wiring devices
 ** Floor box screed floor with support plates & wiring devices

Pack	Cat.Nos	Floor boxes for screed floor
1	6896 34	Full backbox for screed floor 3 compartments (325 x 325 mm). Accepts PVC and metal screed floor raceways and conduits with Dia20 and 25 mm. Auto adjustable to screed height 65 to 90 mm
1	6896 45	4 compartments backbox for ducting upto 300 mm
5	6896 31	Lid & trim for 3 compartment floor box Grey cover RAL 7031 with flexible cable exits. Size 265 mm x 265 mm
5	6896 41	Lid & Trim for 4 compartment backbox (Grey cover RAL1019) with flexible cable exits
1	0880 73	50 mm reduced height floor boxes Backbox for shallow concrete floor
1	0880 70	Lid & Trim for screed floor between 50 and 70mm with cover for carpet (to be used with backbox 088073 in concrete floor)
5	0880 72	Stainless steel finishing plate for 50 mm floor box
12	6896 62	Support plates for floor boxes 77 mm width plate Blank plates for floor box. To cover of an unused compartment.
1	6896 17	Flat support plate 8 module for integration of Myrius mechanisms
4	6896 78	Waved support plates. For 4 modules (2 x 2 modules)
10	6896 92	Stainless steel insert for lid For a metal finish on lid. To be used instead of fitting carpet onto the lid For 3 compartment floor boxes dimension : 245.5 x 210 mm

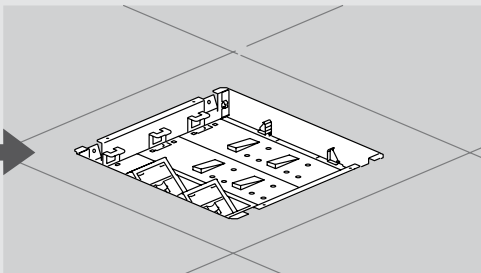
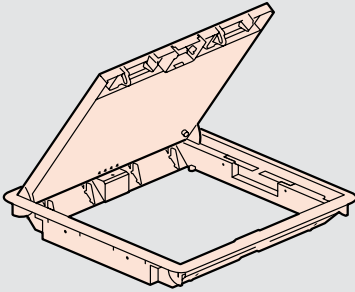
lid and trim

for carpet floor boxes

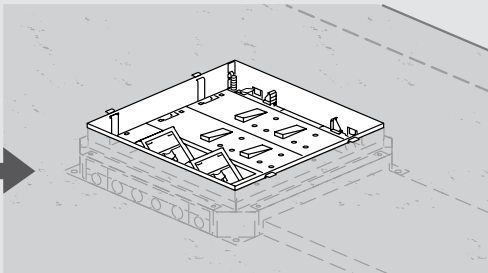
Application

Lid and trim can be used for all applications: screed and raised access floor systems. It allows a uniform finish within the project

Cat.No 6896 31



Raised floor



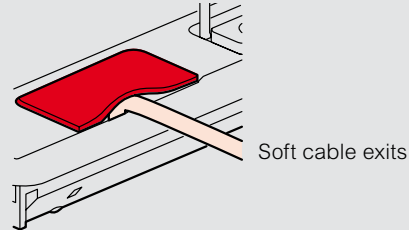
Screed floor

Functions

Lid & trim

Flexible cable exits

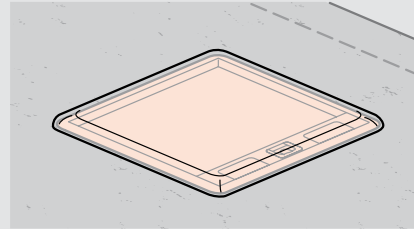
Flexible cable exits: maximum cable capacity 4 cables Ø7 mm + 3 cables Ø11 mm. Both systems provide maximum protection for cables. Flexible exit does not require closing when not in use.



Soft cable exits

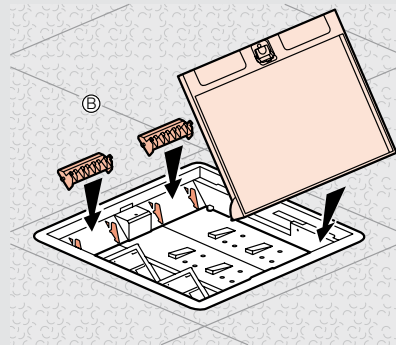
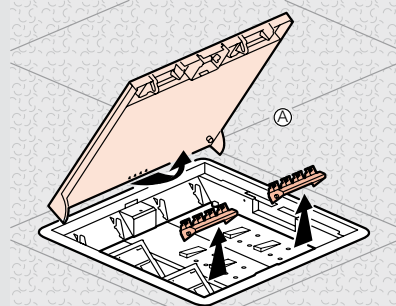
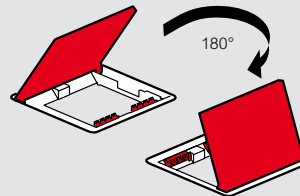
Site protection cover

Lid and trim comes with a building site protection to avoid damages during installation. This site protection should be removed to access the floor box and can be repositioned afterwards. Site protection cover should remain on the floor box until hand-over of the project



Reversible lid

The lid is reversible (180°) to adapt to office furniture reconfiguration



lid and trim

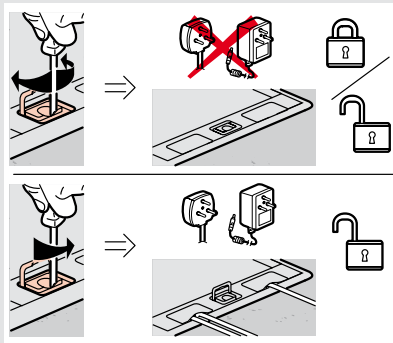
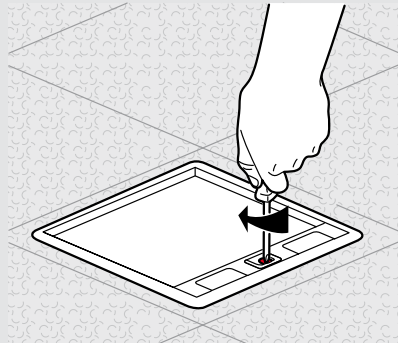
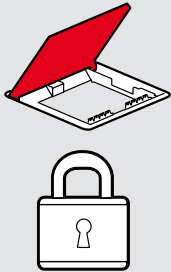
for carpet floor boxes

Functions

Lid & trim (continued)

Locking system

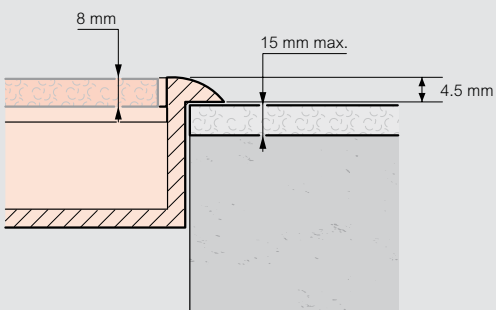
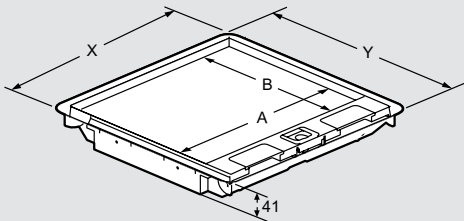
The floor box can be locked by means of a locking system on the lid (hidden under the opening handle). For safety reasons, floor box should not be locked when in use



Dimension

Lid & trim

Maximum cable capacity 4 cables Ø7mm + 3 cables Ø11mm



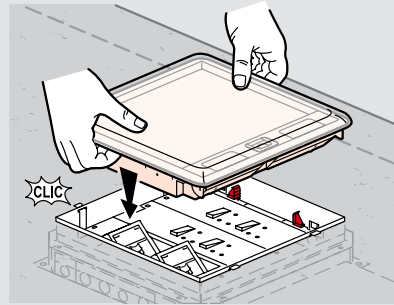
Carpet thickness < 15 mm

Cat.No	X	Y	A	B
6896 31	280	280	245.5	210

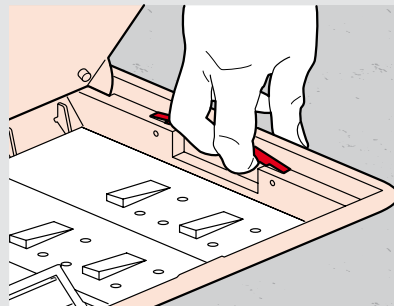
- 3 compartments
- Grey RAL 7031

Installation process

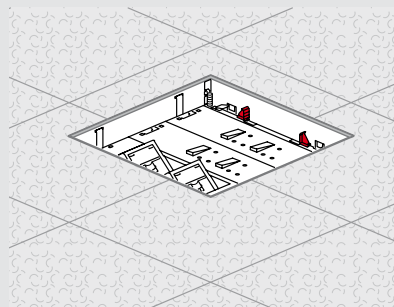
Fix the lid and trim directly onto the backbox, push and fit system. Lid and trim can be assembled with backbox even before carpet fitting



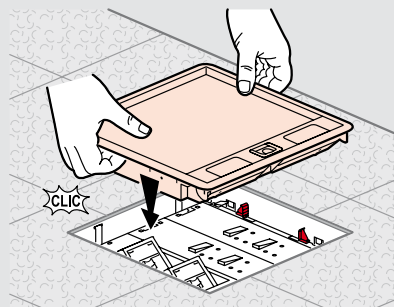
To fit carpet, pull the levers on both sides to take out the lid and trim



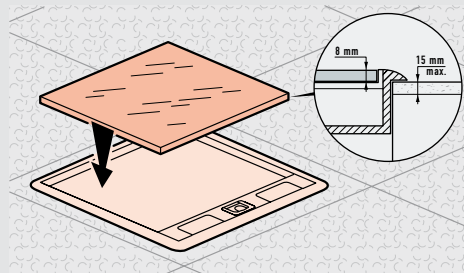
Fit the carpet to the backbox edge



Push the lid and trim back on to the backbox The trim will adjust to the carpet thickness



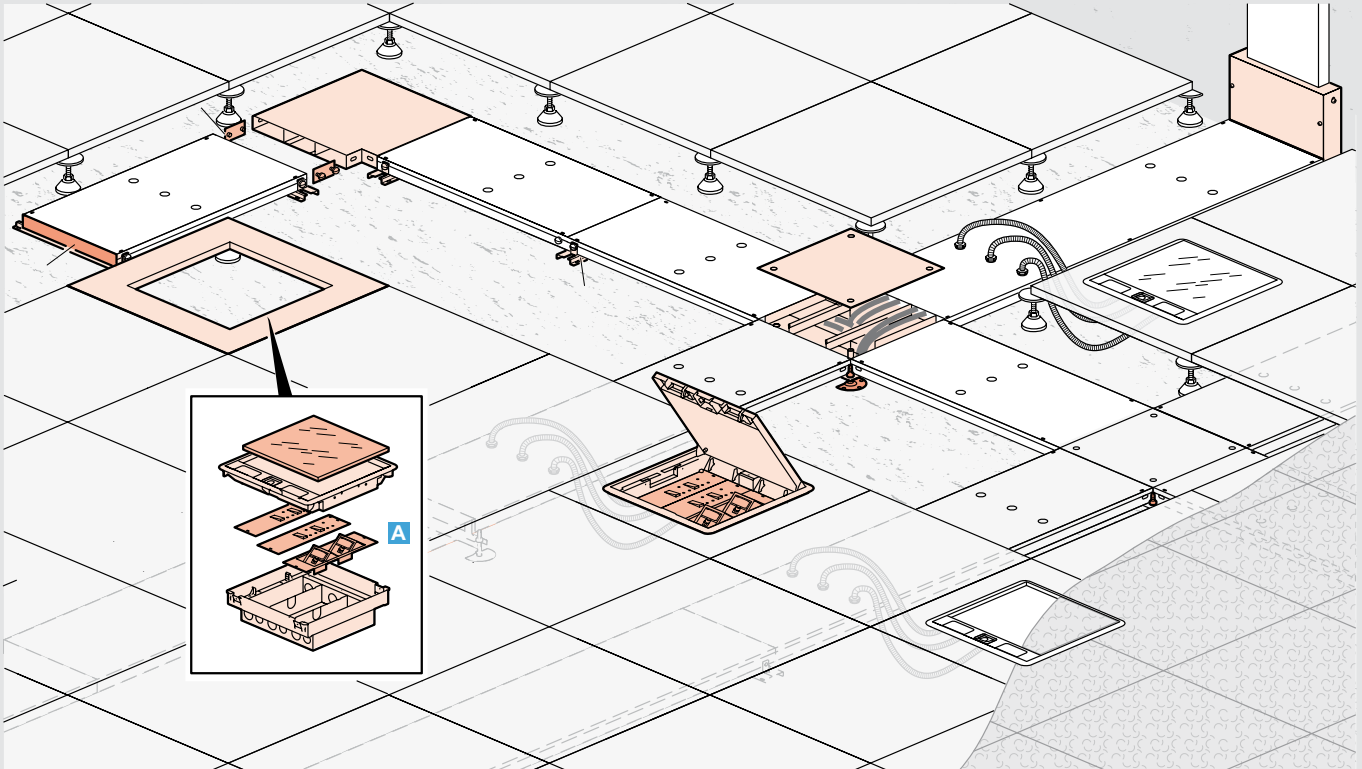
Put 8 mm carpet tile on the lid, to have perfect finish



floor box for carpet

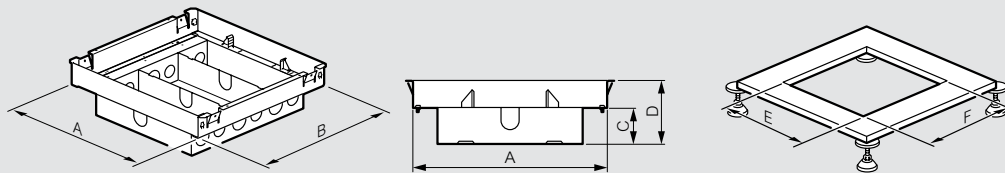
raised floor

System overview



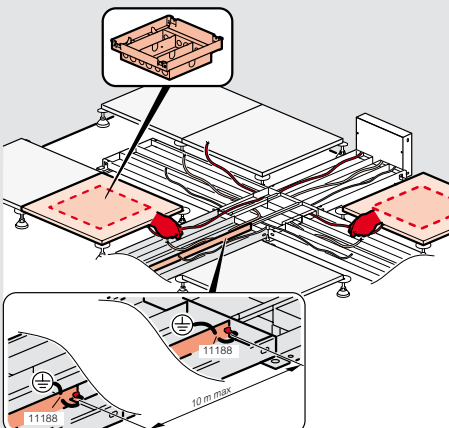
A Floor box (full backbox + lid and trim) Socket outlets and data sockets plates to be ordered separately

Full backbox Cat.No 6896 38 for raised floor

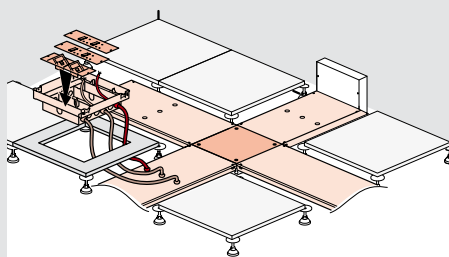


Cat.No	A (mm)	B (mm)	C (mm)	D (mm)	No compartment
6896 38	263	263	48	86	3

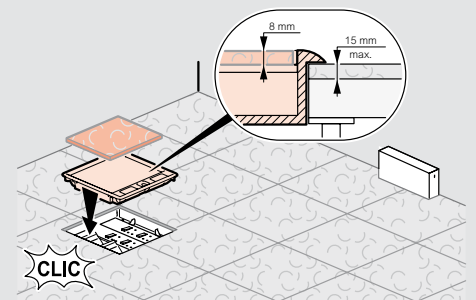
Installation principle



Cut raised access floor tiles according to backbox size and earth the system (minimum every 10 meters)



On trunking, remove knockouts to fit flexible conduit. Fix the wiring accessory plates. Earth the system

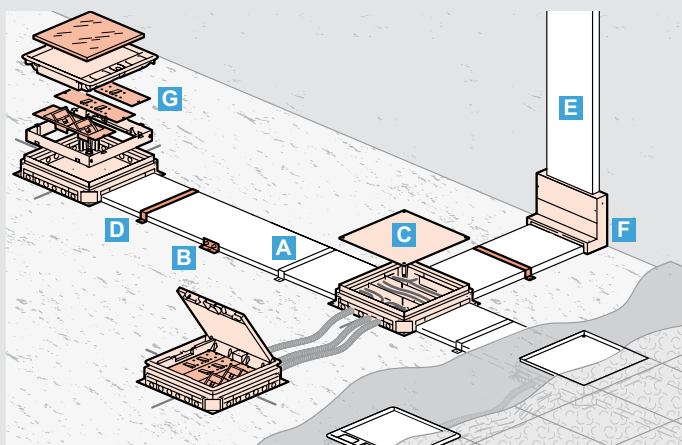


Fit the floor covering (carpet,...) and clip the lid and trim onto the backbox (push and fit principle)

floor boxes for carpet

screed floor

System overview



- A** Raceways
- B** Coupler
- C** Junction box
- D** Fixing bracket
- E** Vertical trunking such as DLP
- F** Riser
- G** Floor box (back-box + lid and trim)
Socket outlets and data socket plates to be ordered separately

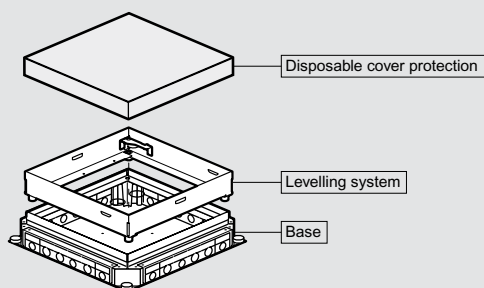
Backbox Cat.Nos 6896 34 and 0896 04

The backbox should be fixed directly on the slab. The backbox has to be equipped with wiring accessory plates and lid & trim.

The backbox allows deviation of power and data cable: Adjustable height from 65 to 90mm.

Side plates are pierced to suit raceways and are supplied with knockouts to fit conduits (20 or 25mm diameter).

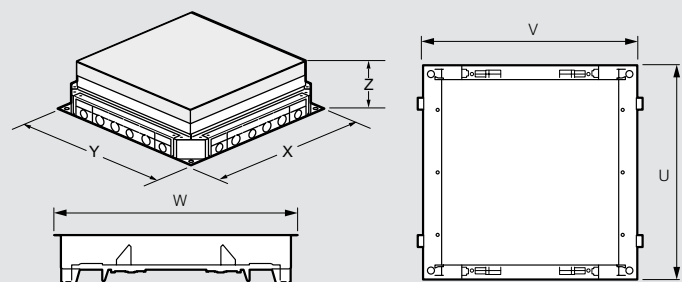
Backboxes consist of a base, levelling system and a disposable cover protection



Dimensions

Backbox (mm):

Cat.Nos	X	Y	Z
6896 34 / 0896 04	325	325	90
6896 45	400	325	90



Metal frame (mm):

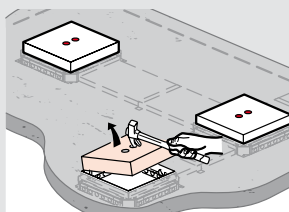
Cat.Nos	W	V	U
6896 34 / 0896 04	276	264	264
6896 45	276	264	343

Note: dimensions of the different positions of the metallic frame in the backbox can be found on the page 22 (technical characteristics)

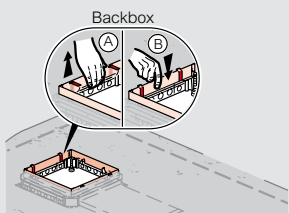
Installation principle

Backboxes are to be used with lid & trim

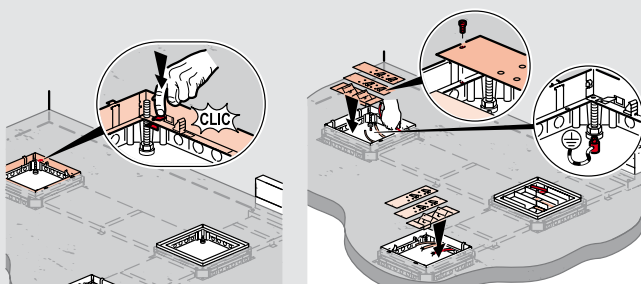
Once the screed is dry, remove disposable cover protection



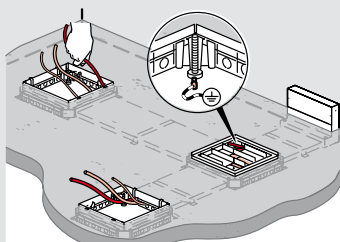
To install the backbox: Lift the frame (A) and retainers will automatically drop out (B).



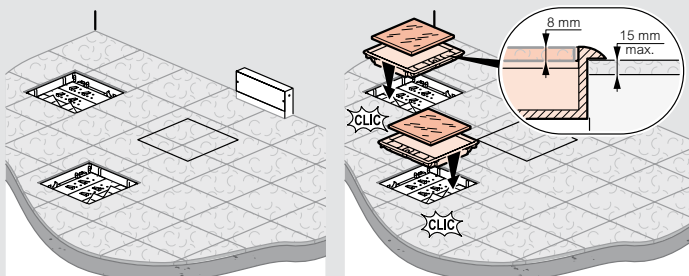
Lock the frame onto the backbox by pushing down clips onto the threaded rods in each corner.



Connect wiring to accessory plates and then fix to the backbox. Finally, earth the system.



Fit carpet and clip the lid and trim onto the backbox (push and fit principle)



floor boxes for tile

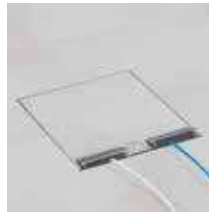
screed floor



0896 04 + 6896 52



6896 52 + 0896 04



6896 52 with cable exit



0896 04 + 6896 56



0896 04 + 6896 55



6896 56 + 0896 04



6896 56 with cable exit



0896 04 + 6896 55*



6896 62



6896 17

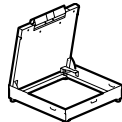
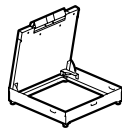
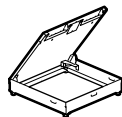
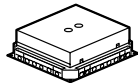


6896 78

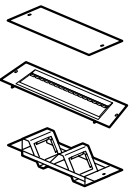
Technical characteristics & installations p. 20-21

Conform to EN 50 085 - 2.2 and EN 60670-23
 Flat and simple installation
 Compatible with raised floor, flush floor and screed floor system

Pack	Cat.Nos	Floor boxes for tile / marble
1	0896 04	Backbox for screed floor For installation of floor box Cat.No 6896 52 for screed floor system. Screed thickness 65 to 90 mm
1	6896 52	Lid & trim for tiles / marble Double cable outlet (stainless steel 304 lid & trim) Edge trim for tile 15 to 22 mm thickness To be installed in backbox
1	6896 55	Single cable outlet (powder coated head band & cable outlet) Edge trim for tile 8 to 15 mm thickness. To be installed in backbox Cat.No 0896 04 for screed floor system.
1	6896 56	Single cable outlet (stainless steel 304 head band & cable outlet) Edge trim for tile 8 to 15 mm thickness. To be installed in backbox Cat.No 0896 04 for screed floor system.



Pack	Cat.Nos	Floor boxes for tile / marble (continued)
12	6896 62	Support plates for floor boxes 77 mm width plate Blank plates for floor box. To cover of an unused compartment.
1	6896 17	Flat support plate 8 module for integration of Myrius mechanisms
4	6896 78	Waved support plates. For 4 modules (2 x 2 modules)



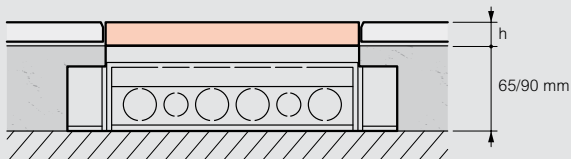
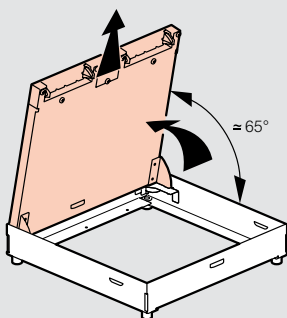
*Floor box for tile (8-15 mm thick)
with support plates & wiring devices

floor boxes for tile

screed floor

Lid & trim

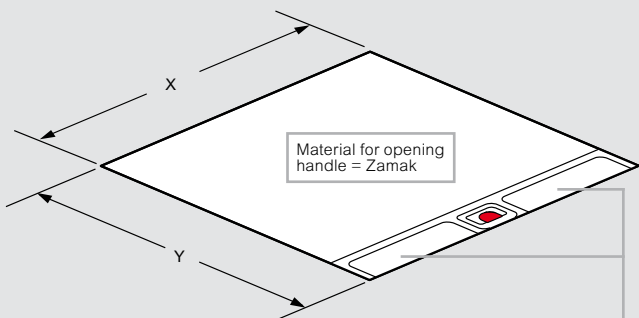
Floor box for tile / marbles
Cat.Nos 6896 52 / 55 / 56



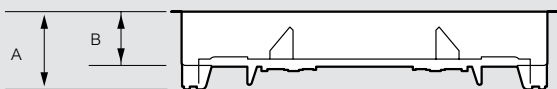
Total screed thickness has to be between 65 and 90 mm

Backbox for tiles/marble	Lid and trim for floor box for tiles/marble	Screed thickness (mm)	Tile thickness h (mm)
0896 04	6896 52 6896 55 6896 56	65 to 90	15 to 22 8-15 mm 8-15 mm

Dimensions (in mm) Cat.No 6896 52



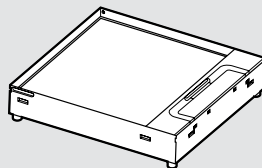
Full metal rigid cable exits: Maximum cable capacity 4 cables Ø 7mm + 3 cables Ø 11mm Provides maximum protection for cables and strength



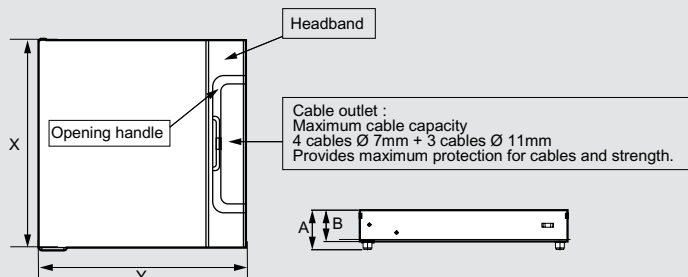
Cat.No	X	Y	A	B
6896 52	264	264	64	54

Material of floor boxes for tiles / marble: stainless steel material AISI 304.

Dimensions (in mm) Cat.Nos 6896 55 / 56



Dimensions (in mm)



Dimensions (mm):

Cat.Nos	X	Y	A	B
6896 55/56	264	264	57	47

Material of floor boxes for tiles/marble:
galvanised steel (DX51D Z275 MAC)

Material for Headband and Cable outlet:
Cat.No 6896 55 : galvanised steel + paint RAL 7031
Cat.No 6896 56 : stainless steel 304

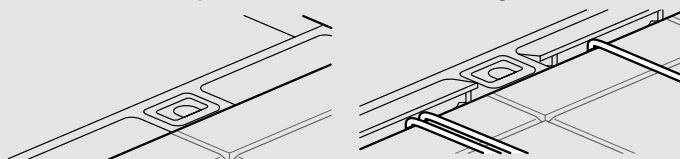
Material for opening handle:
Cat.No 6896 55 : Zamak + paint RAL 7031
Cat.No 6896 56 : Zamak + send blasting + varnish

Functions

Cat.No 6896 52

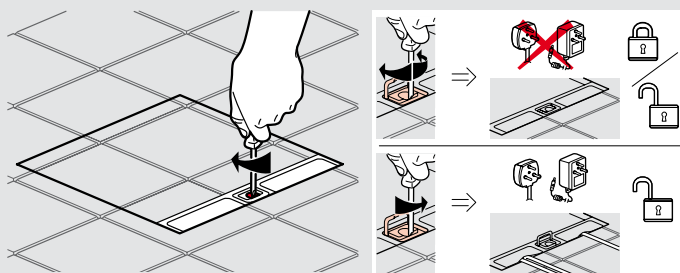
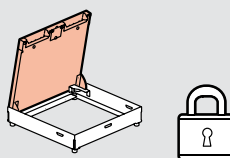
Rigid cable exits

Full metal rigid cable exits
Maximum cable capacity 4 cables Ø 7 mm + 3 cables Ø 11 mm
Provides maximum protection for cables and strength



Locking system

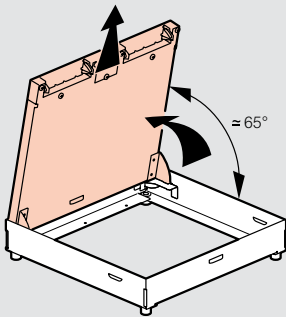
The floor box can be locked by means of a locking system on the lid (hidden under the opening handle)
For safety reasons, floor box should not be locked when in use



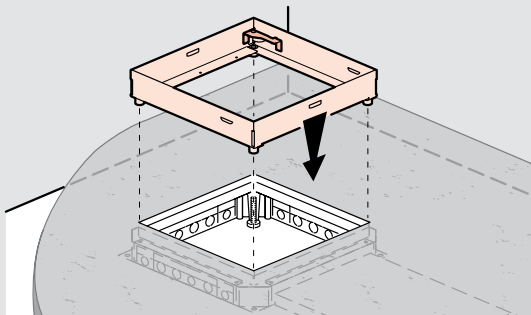
floor boxes for tile

for screed floor

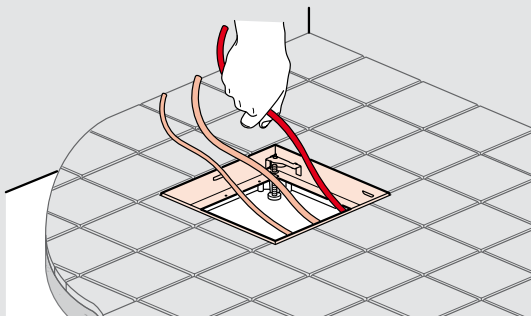
Installation process



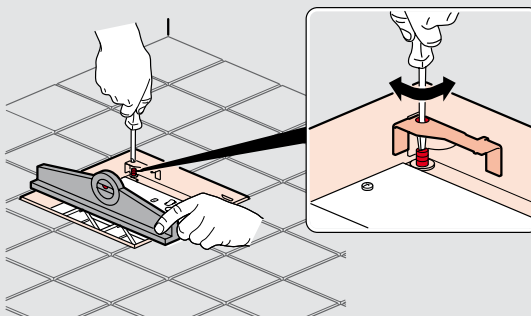
To remove the lid from the trim, hold it under an angle of approximately 65° and pull it out



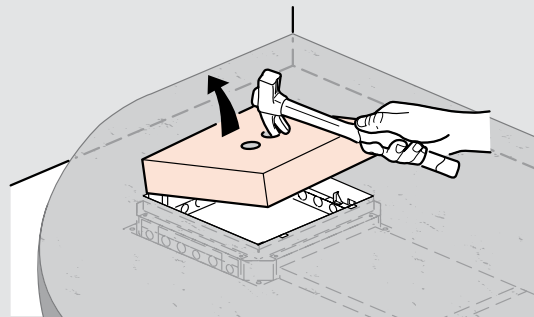
Place the trim onto the threaded rods



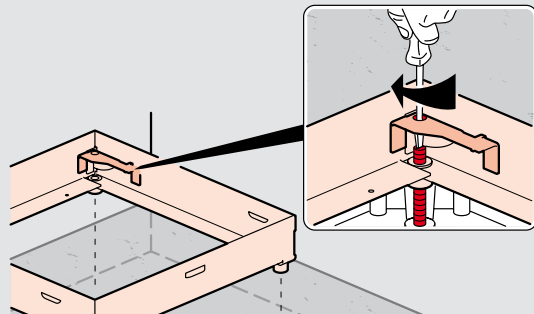
Cable the system



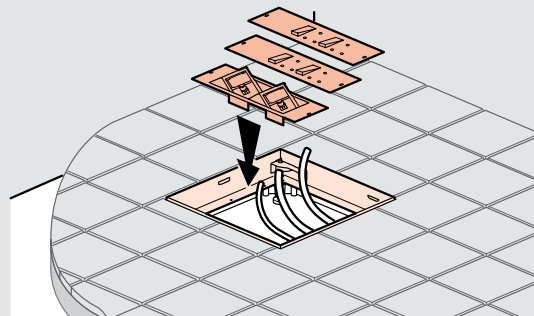
Make final adjustment to finished floor level by turning threaded rods in each corner with a screw driver



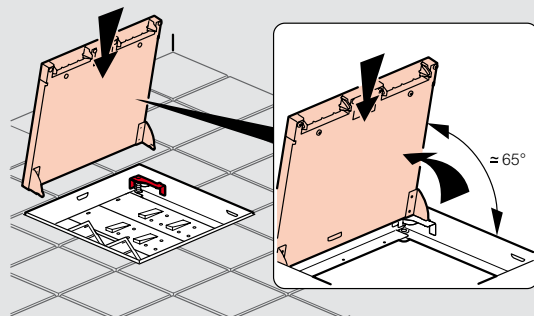
Remove site cover protection from backbox



Make a rough adjustment to finished floor level by turning threaded rods in each corner with a screw driver



Tiling should be carried out at this stage



Push the lid back in place by holding it under an angle of approximately 65°

heavy duty in-screed floor box

IP 66, for screed floor



0896 34 + 0896 83 + 0896 85



0896 34 + 0896 83 + 0896 86 + 0896 87



0896 34 + 0896 83 + 0896 88

For highly frequented areas, requiring important mechanical resistance and/or washing down
Conform to standard EN 60-670 and EN 50 085-2-2

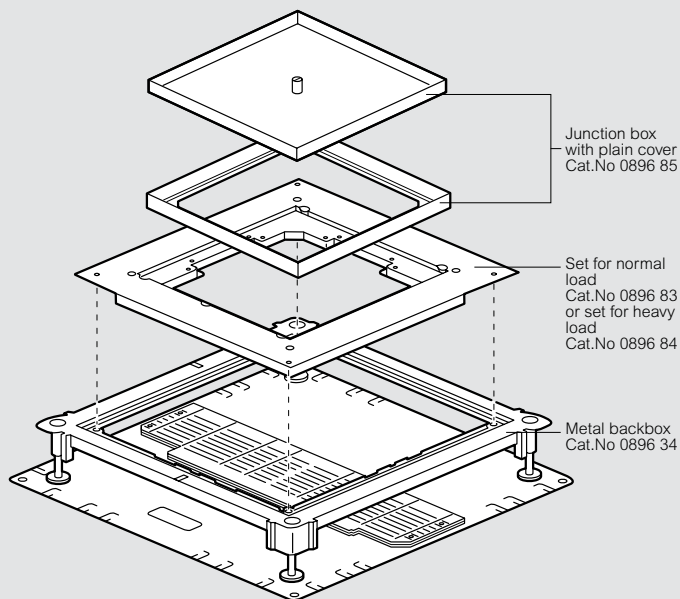
Pack	Cat.Nos	Heavy duty in-screed floor box
1	0896 34	Metal in-screed floor box Universal metal in-screed backbox Junction or connection point for concrete floor according to type of cover associated For junction of LV and ELV cabling and/or installation of floor boxes Height adjustable from 105 mm to 140 mm using 4 inserts located in the box corners and a tool adapting to electric drill or screwdriver Bendable side walls for assembling with different sizes of floor raceways Supplied with worksite protection cover to be replaced by blanking cover plate or mounting cover plate Allowing floor covering infill between 6 and 24 mm
1	0896 83	Accessories for metal in-screed floor box Normal load support upto 8 KN load with deflection <6 mm
1	0896 84	Heavy load support Up to 20 KN load with deflection <3 mm
1	0896 85	Plates for metal in-screed floor boxes IP 66 plain cover (cover closed) access trap for junction. No cable exit
1	0896 34	Heavy duty in screed floor box with cable exit Metal in-screed floor box Universal metal in-screed backbox Junction or connection point for concrete floor according to type of cover associated For junction of LV and ELV cabling and/or installation of floor boxes Height adjustable from 105 mm to 140 mm using 4 inserts located in the box corners and a tool adapting to electric drill or screwdriver Bendable side walls for assembling with different sizes of floor raceways Supplied with worksite protection cover to be replaced by blanking cover plate or mounting cover plate Allowing floor covering infill between 6 and 24 mm
1	0896 83	Accessories for metal in screed floor box Normal load support upto 8KN load with deflection <6 mm
1	0896 84	Heavy load support up to 20 KN load with deflection <3 mm
1	0896 86	Plates for metal in-screed floor boxes Ip 66 plate (cover closed and plugs not connected) with central cable exit
1	0896 87	Cable exit accessory for IP66 cover plate Cat.No 0896 86

heavy duty in-screed floor box

Metal in-screed floor box, installation principle

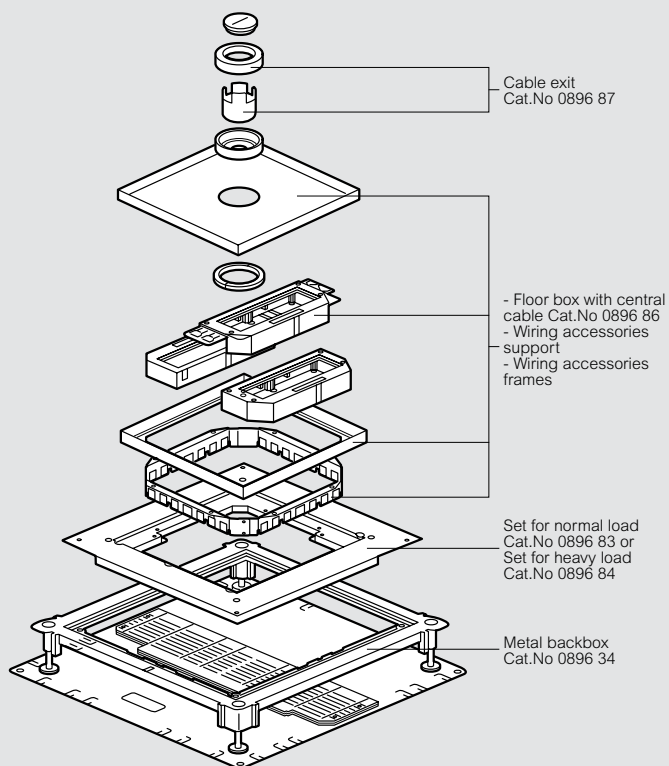
When used as junction box

Junction box with plain cover Cat.No 0896 85



When used as floor box for wiring accessories

Floor box with central cable Cat.No 0896 86



floor access unit

for raised floors



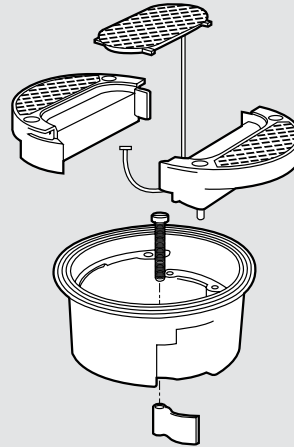
0893 07

Pack	Cat.Nos	Access master box
1/10	0893 07	<p>Circular floor box that can be used as a simple access to the floor void</p> <p>IP 20 - IK 08</p> <p>Box made of 2 parts : aluminium and polyester with neoprene joint 3 Ø 20 mm outgoing</p> <p>Dimensions : Ø 145 mm x 60 mm depth</p> <p>Cut-out dimensions : Ø 127 mm</p> <p>Frame dimensions : Ø 144 mm</p> <p>The specially designed rubber jaws keep the cables secure and prevents accidental disconnection</p> <p>Cabling / conduit not supplied</p>

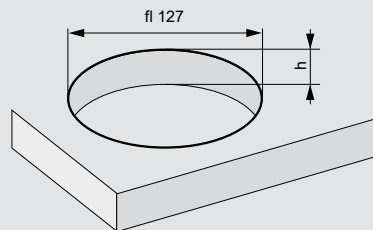
floor access unit

for raised floors

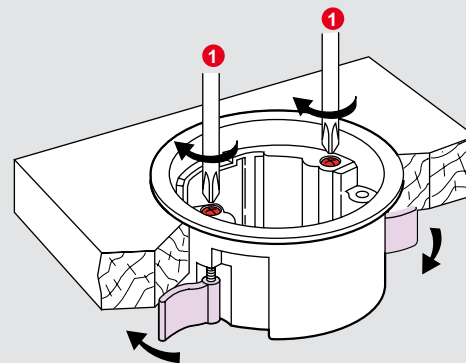
Technical data



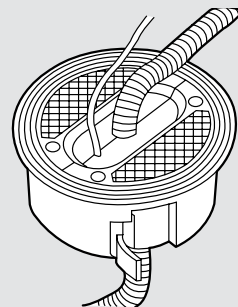
3 piece GRP top, with removable section to allow passage of cables.



$25 \text{ mm} < h < 50 \text{ mm}$



Cable from office multi-outlet extension



SOLUFLEX CABLE FLOOR SYSTEM

SUSTAINABLE DEVELOPMENT

constructed from galvanized steel tiles and polypropylene supports, Soluflex requires no specialized equipment or labour, no fixing and no glue for installation



A wide range of power and data equipment for answering all needs of offices and commercial building installations: floor boxes, mini-columns, grommets...



HIGH LOAD BEARING:
30 000 N/m²

Perfect compatibility with Legrand's market leading cable management solutions and wiring devices...



4 SUPPORT HEIGHTS
37, 60, 90 120 mm for easy VDI cable installation, Cablofil wire mesh

QUICK AND EASY TO INSTALL

Soluflex is an innovative and time saving low-level raised floor system engineered for ultimate flexibility of the office environment. Perfectly adapted for both renovation and new buildings.

Soluflex creates well-organised, multifunctional rooms to provide users with required number of connection points. It is no longer necessary to decide on connection point location at design stage. Cabling can be carried out anywhere under the entire floor and the location of connections can be determined at any stage. Cablofil wire mesh is a complementary solutions for distributing power and data.

